

Deepwater Horizon oil Spill

Deepwater Horizon

April 20th

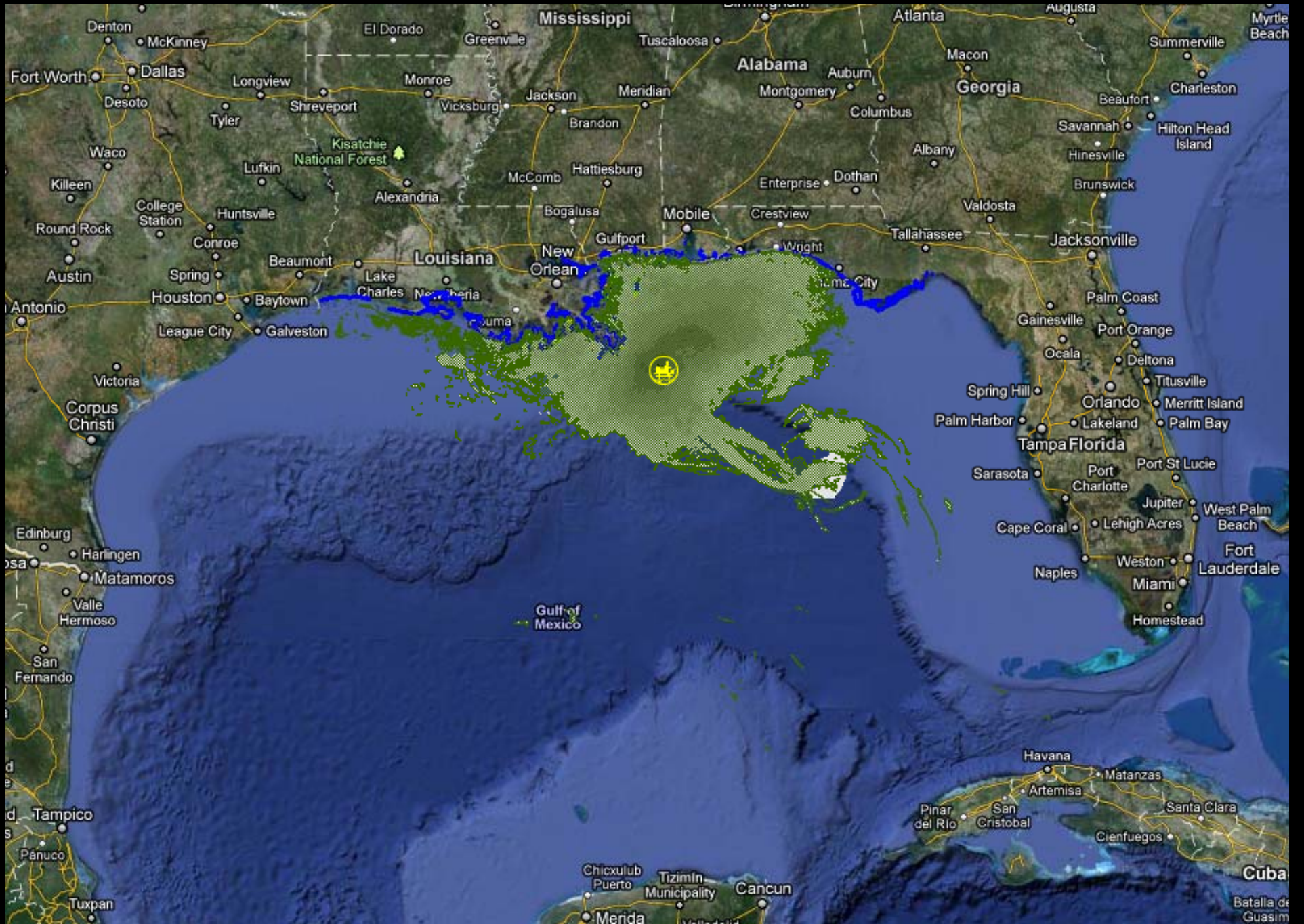


Information

- Burned for 36 hours
- Sank April 22
- 11 humans killed and 17 injured
- Capped July 15

Gulf's Importance

- 33% of Nation's Seafood
- 30% of Nation's Oil
- 16% of Nation's natural gas



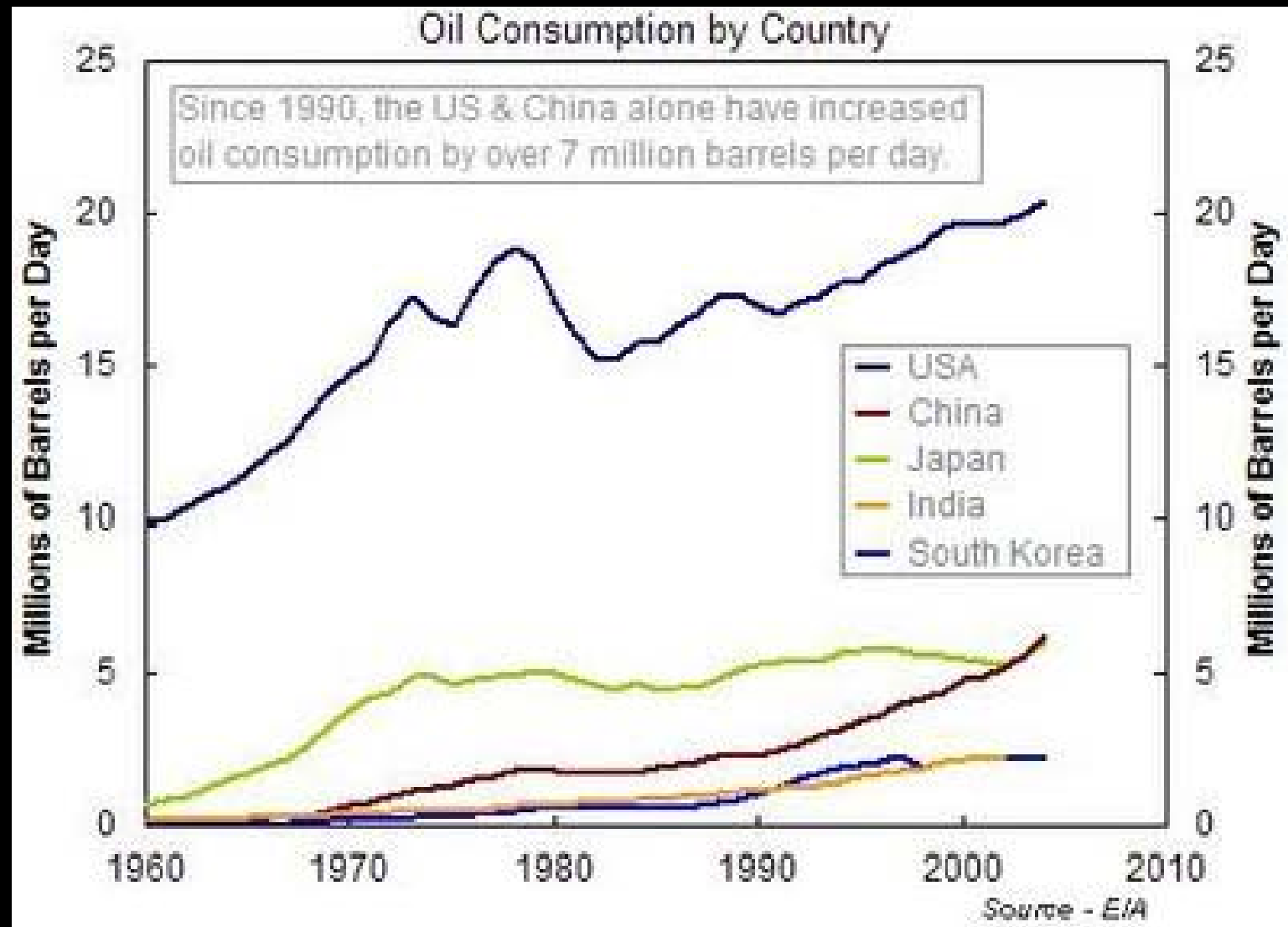
<http://resources.geoplatform.gov/news/mapping-response-bp-oil-spill-gulf-mexico>



Flow stats

	Barrels/day	Gallons/day
After explosion	1000	42,000
April 29	1000-5000	42,000-210,000
May 27	12K-19K	500K-800K
June 19	35K -60 K	1.5 -2.5 million
86 days of flow	3 - 5 million	129 - 215 million

How much oil is that ?



Impacts

Environmental



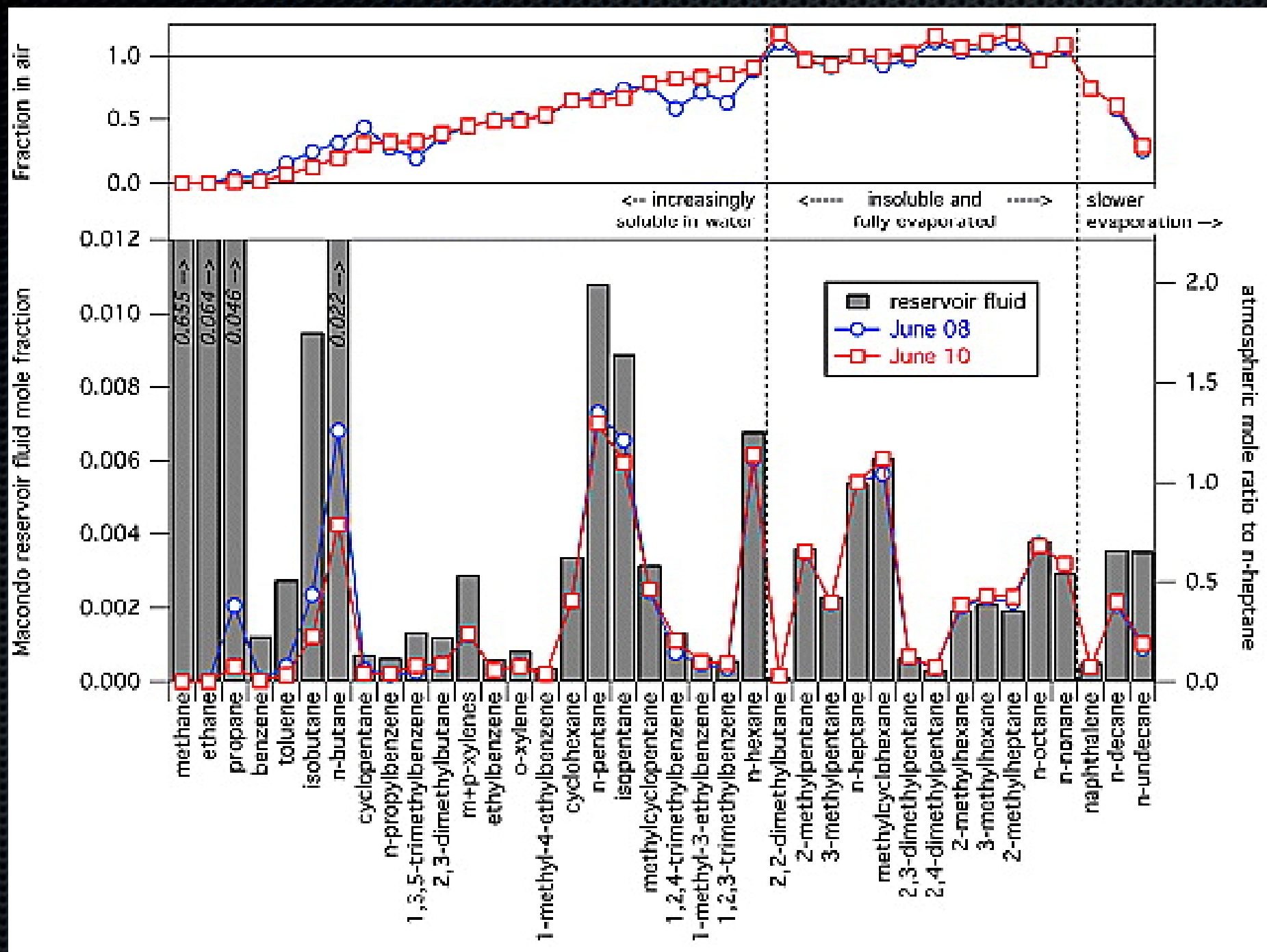
Economic

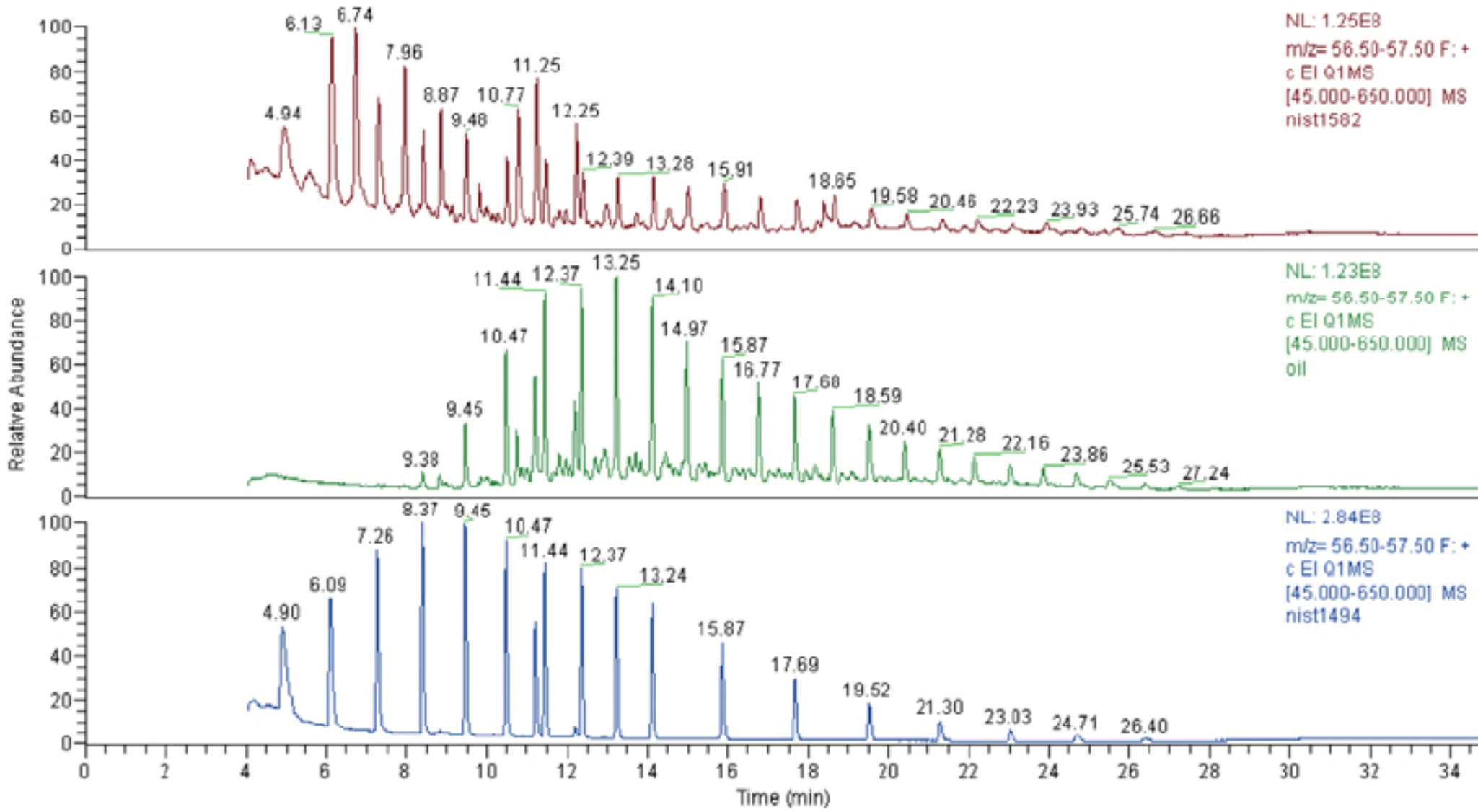


Societal







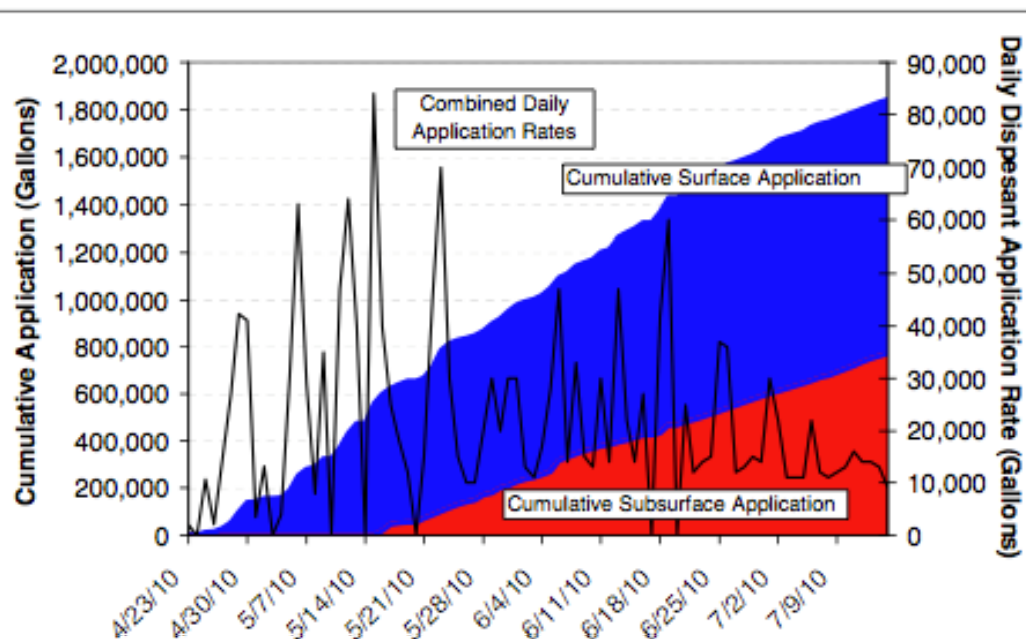


Dispersants



Dispersants

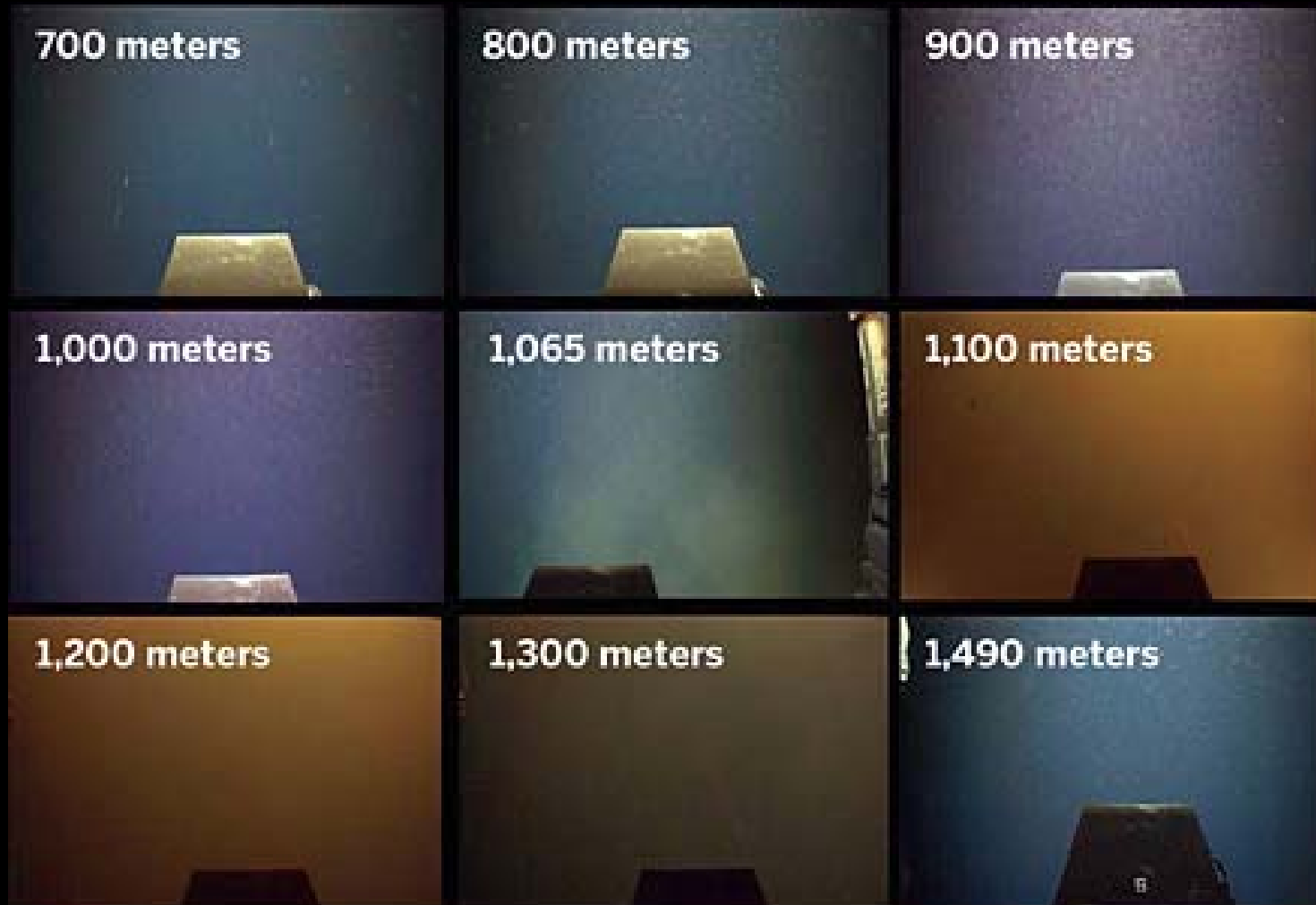
Figure 4. Surface and Subsurface Chemical Dispersant Application during the 2010 Gulf Oil Spill
Cumulative Application



Source: Prepared by CRS with data from daily "Current Operations" updates, available at <http://www.restorethegulf.gov/>.



Deep oil



Richard Camilli/WHOI

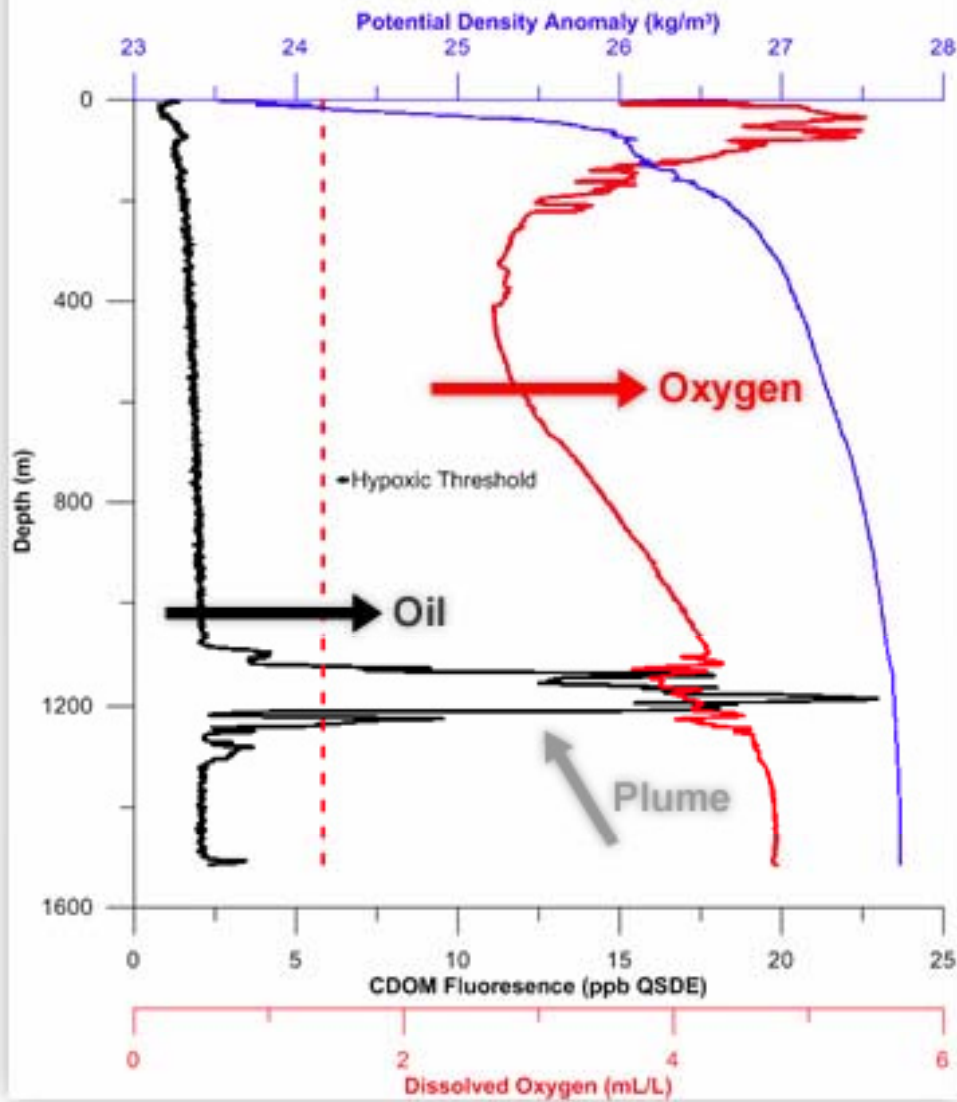
Images taken by Sentry during its descent through an oil plume near the Deepwater Horizon well show a highly turbid oil-emulsion layer at a depth of 1,065 to 1,300 meters.

Deep oil

NOAA-JAG Report

RV Brooks McCall Cruise 5 Station 57

May 31, 2010 (28 42.30558 N 88 24.099 W)



Photos from Samantha Joy



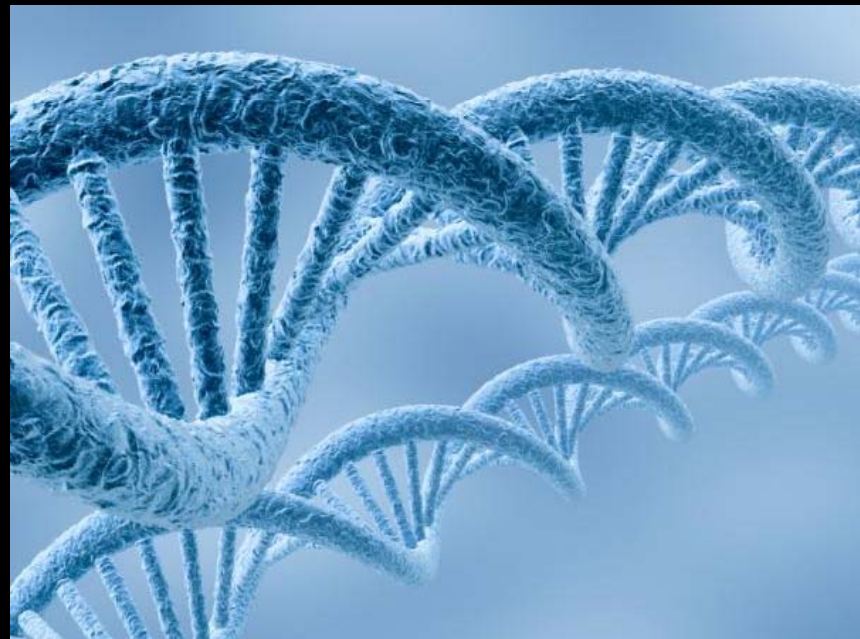
A high diversity of organisms are found in carbon seep communities.





Photograph courtesy of the BOEMRE and NOAA OER Lophelia II expeditio





Taxonomic Shifts between Pre-spill and Post-spill Samples

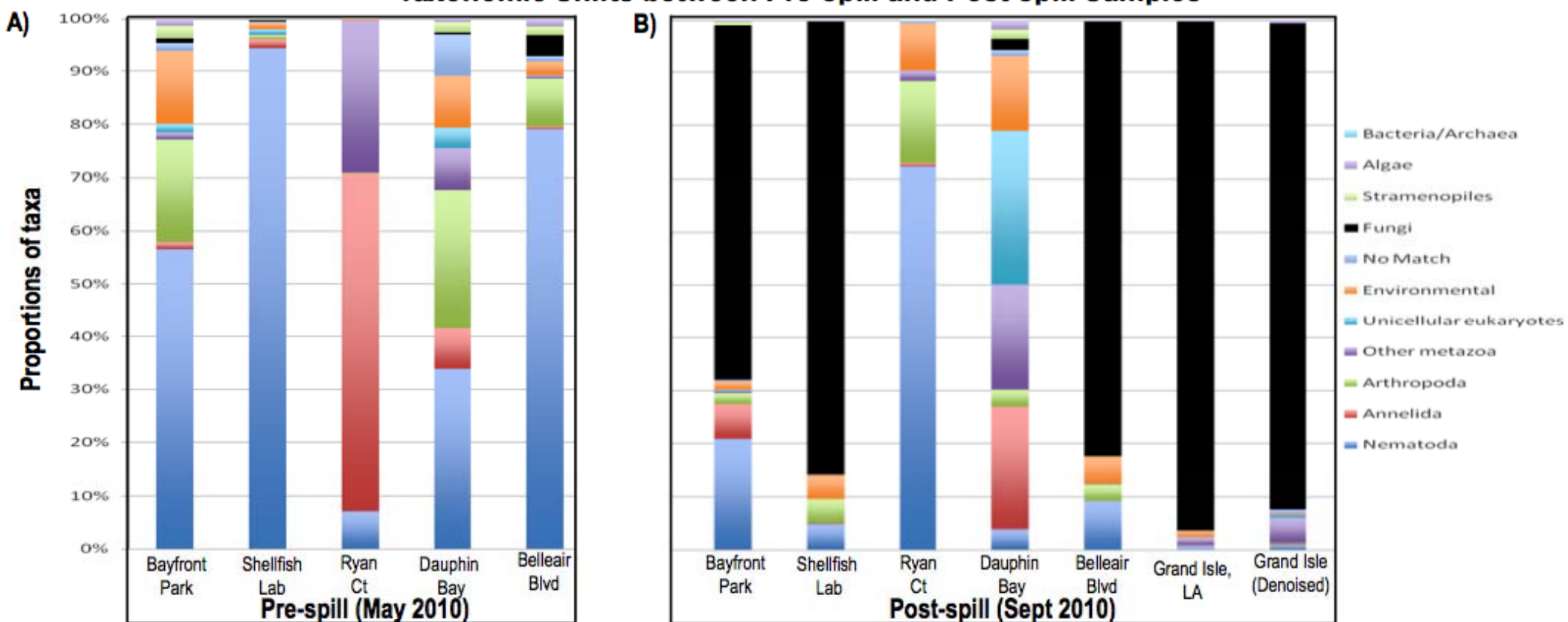


Figure 2. Meiofaunal taxonomic comparisons between pre-spill and post-spill at Dauphin Island, AL intertidal locations. (A) Pre-spill and (B) Post-spill community taxonomic composition. Proportions calculated from non-chimeric OUT's in UCLUST at a 99% pairwise identity cutoff. (Bik *et al.*, in review.)