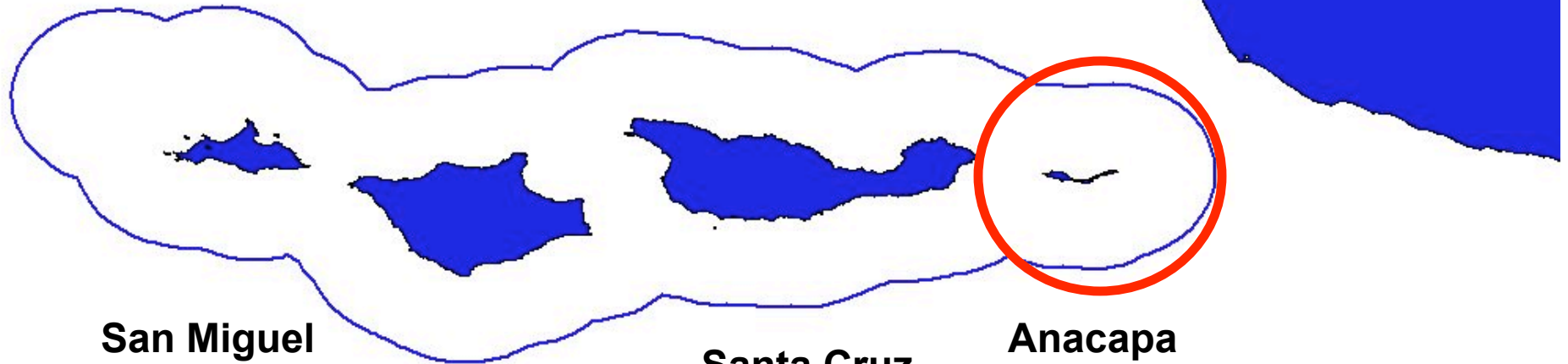


Santa Barbara, California

Channel Islands National Marine Sanctuary



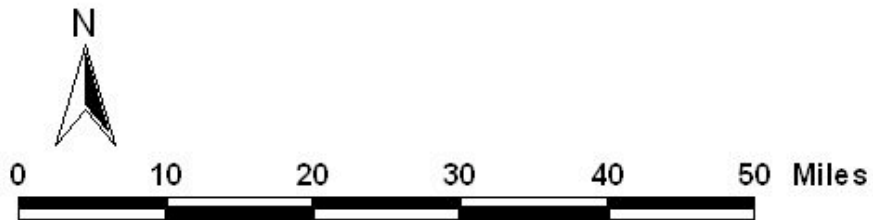
**San Miguel
Island**

**Santa Rosa
Island**

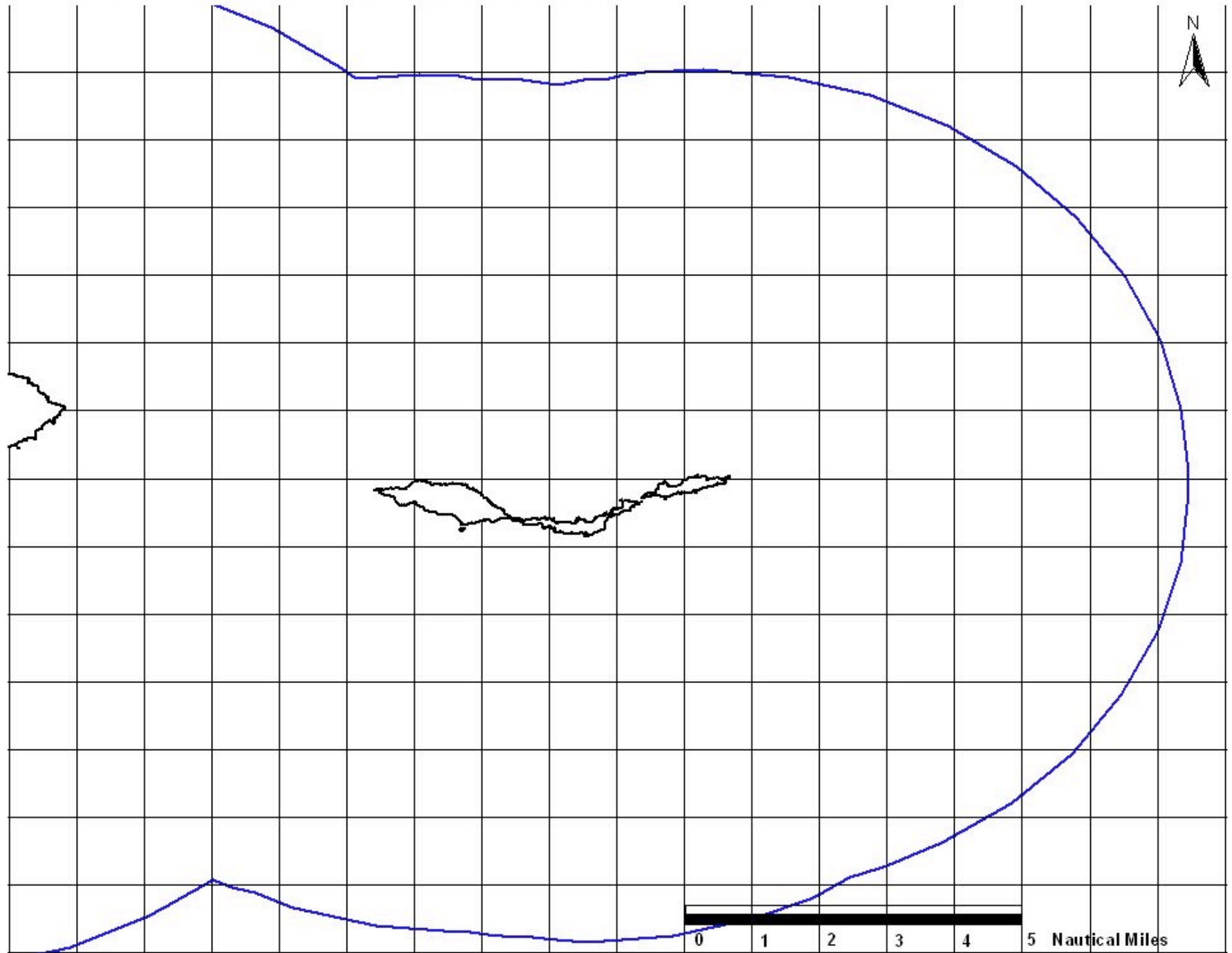
**Santa Cruz
Island**

**Anacapa
Island**

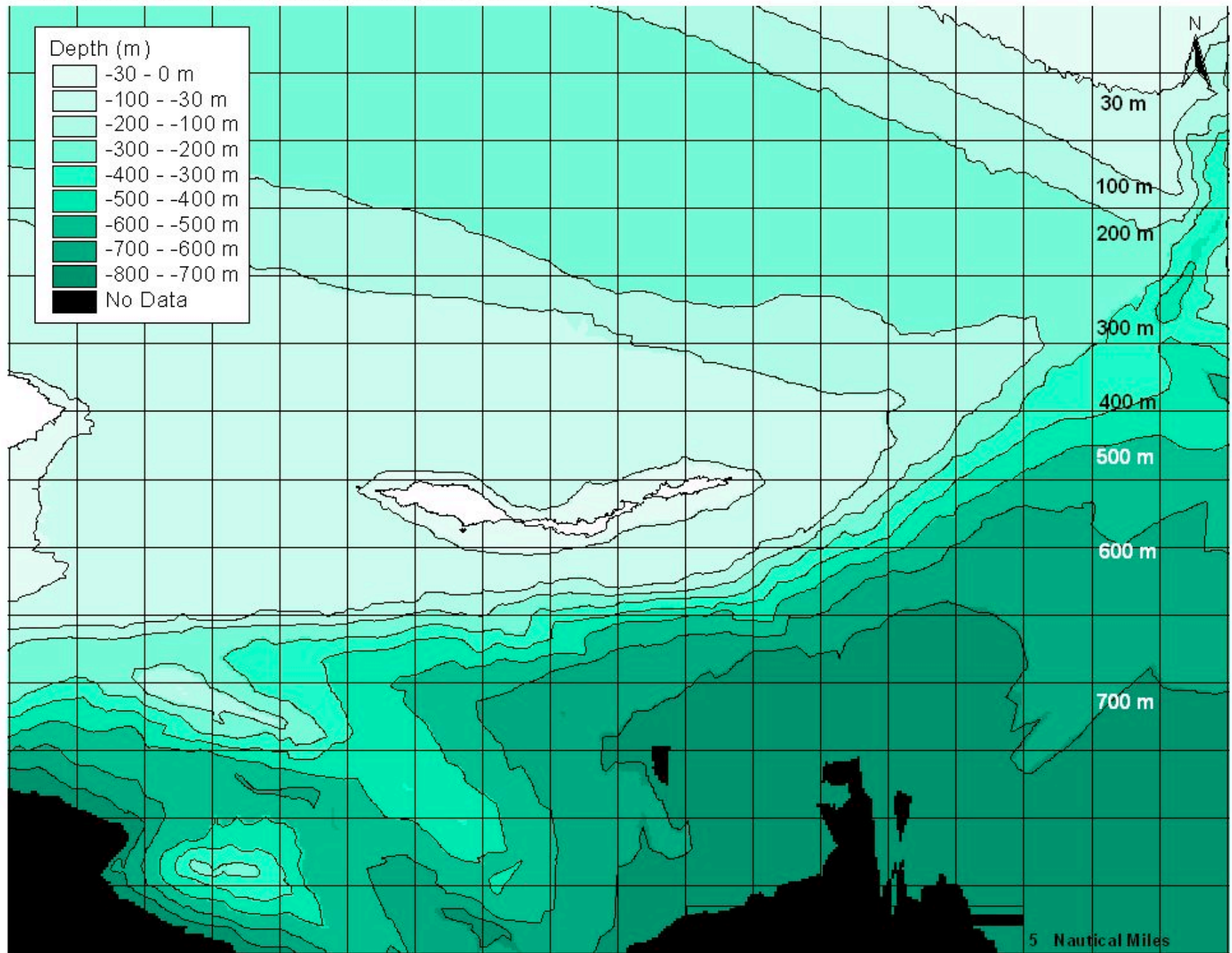
**Santa
Barbara
Island**



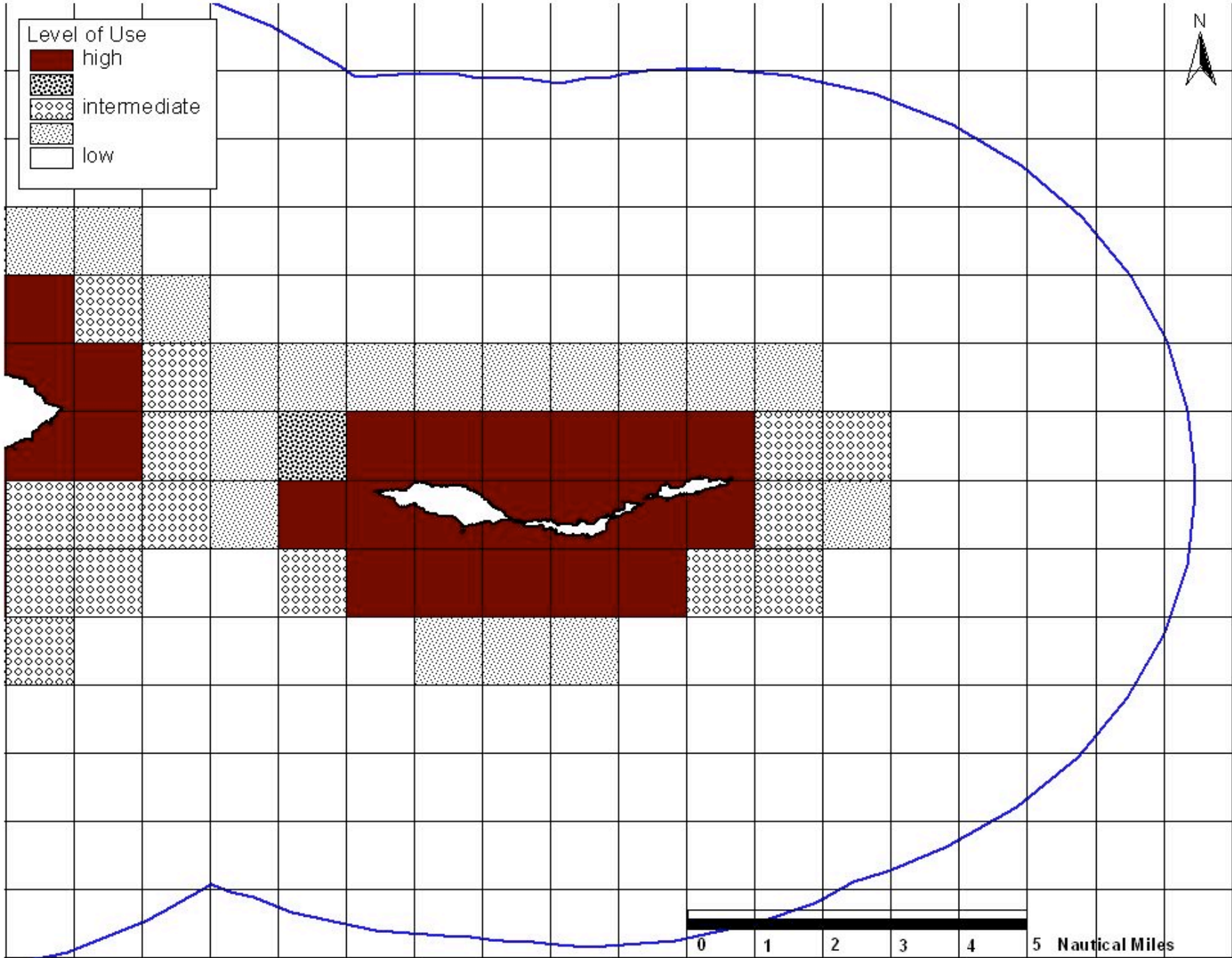
Worksheet: Where would you establish marine reserves?



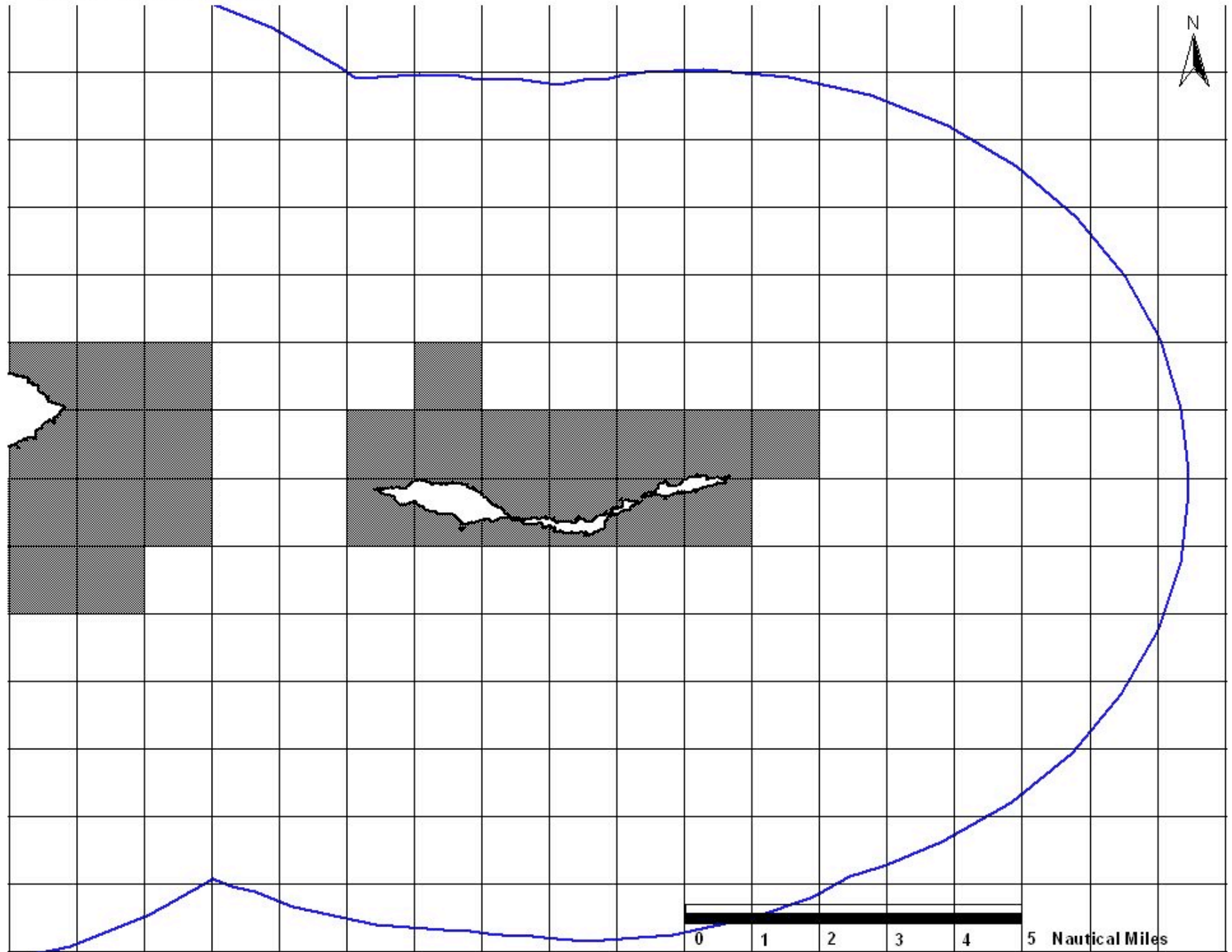
Depth of the Sea Floor Around Anacapa Island



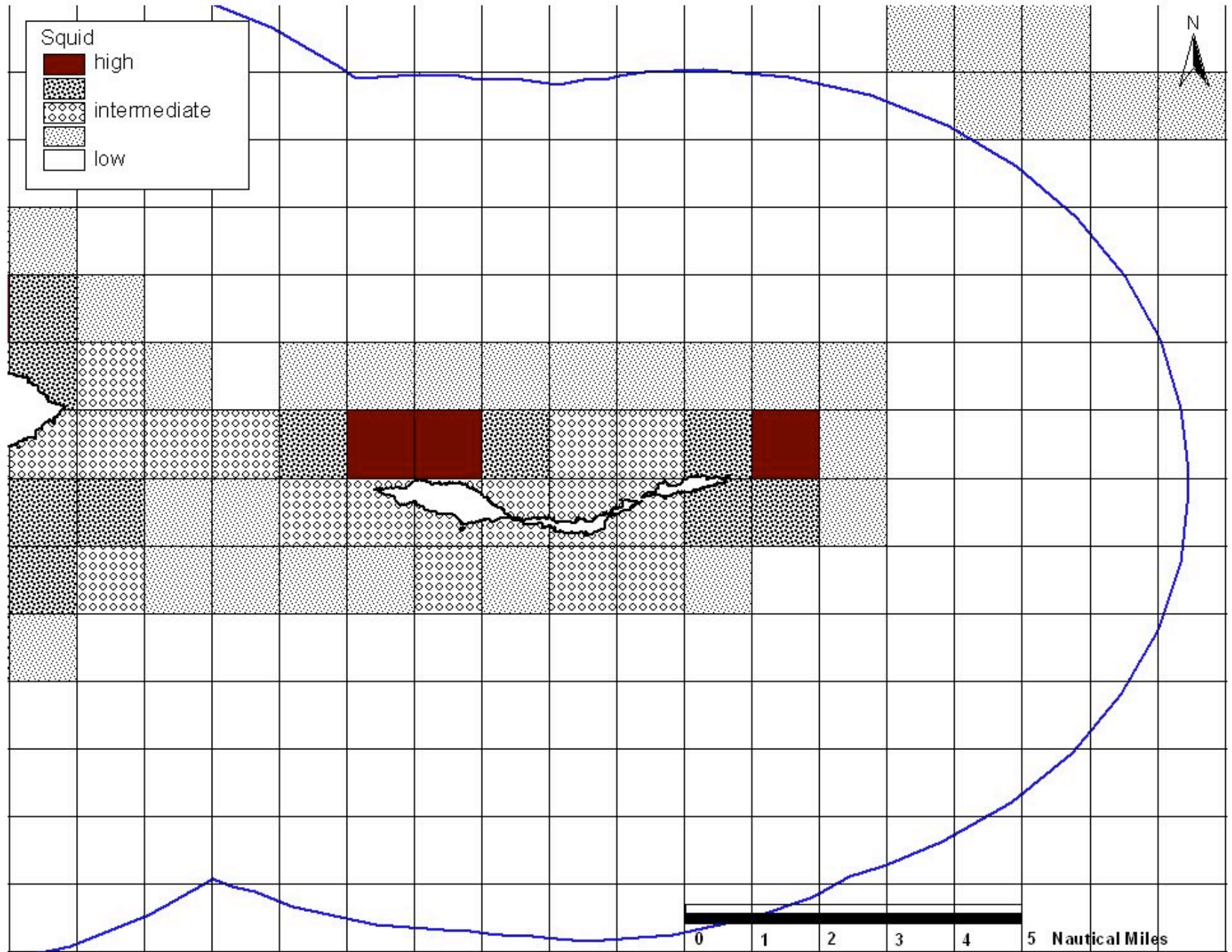
Value for Non-Consumptive Recreational Diving



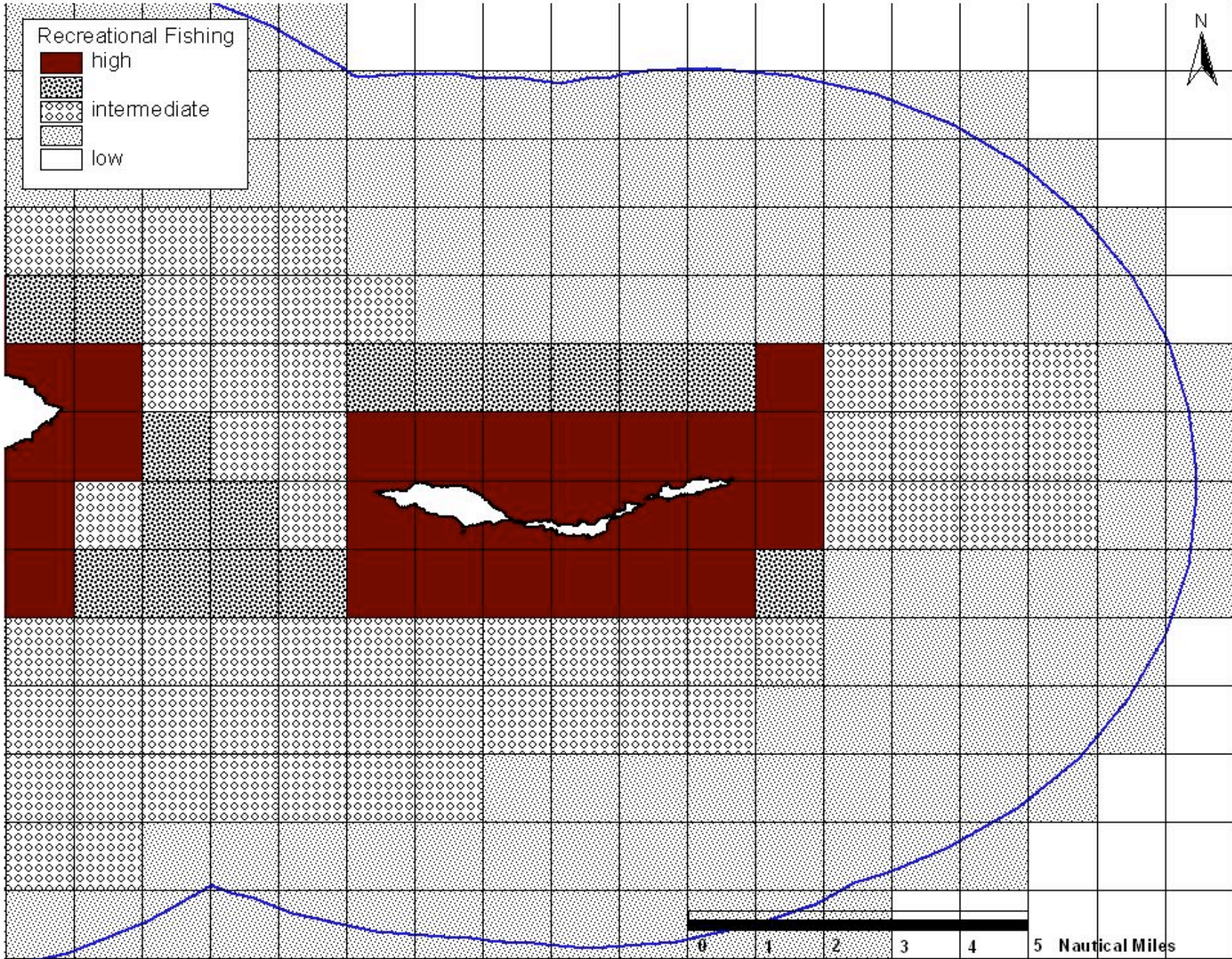
Lobster Fishing Grounds



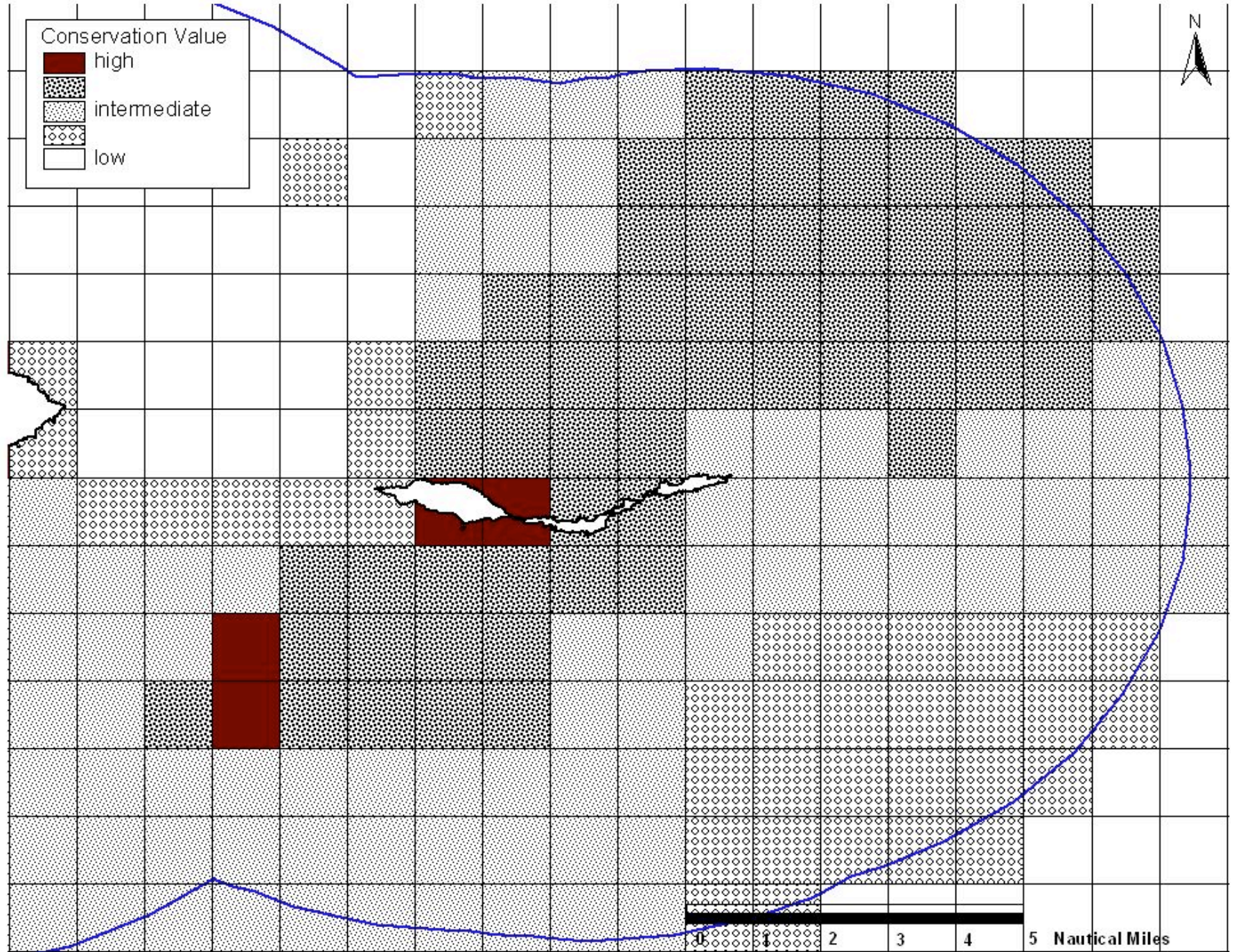
Relative Value of Different Areas for Squid Fishing



Relative Value of Different Areas for Recreational Fishing



Relative Value of Different Areas for Conservation



Number of Different Commercial Fishing Industries that Use Each Square Nautical Mile

